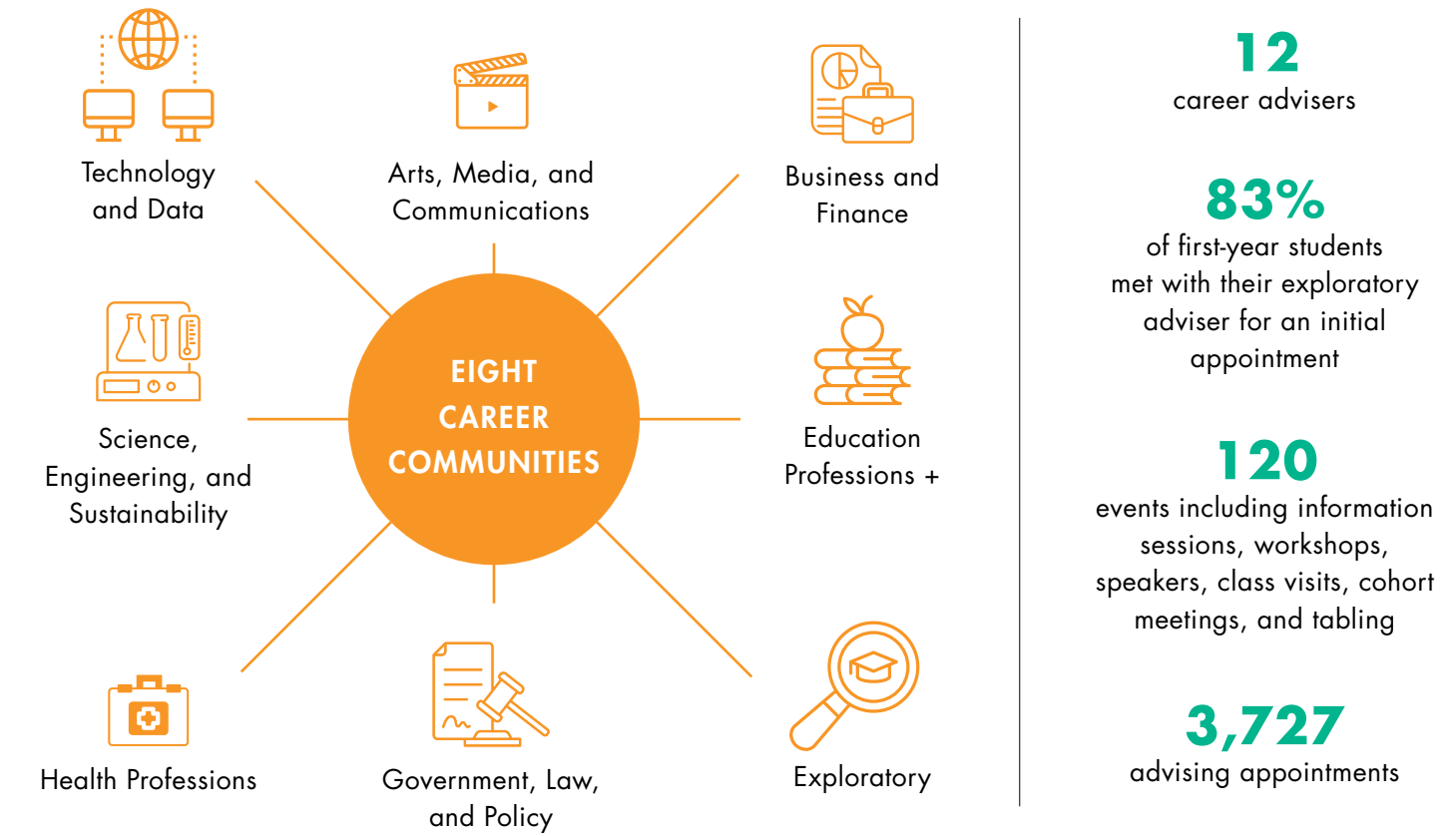


2024–25 CAREER COMMUNITIES

CAREERS, LIFE, AND SERVICE

Grinnell College's Career Communities—a signature program offered by the Center for Careers, Life, and Service—provide students and alumni with tailored advising, programming, and resources across eight distinct areas, including a team-led Exploratory Career Community and seven pre-professional career communities.



THREE ASSESSMENT TOOLS OFFERED

CliftonStrengths
Strong Interest Inventory
Challenge Cards

EXTERNSHIPS

91 student externs

80 alumni hosts

Experiences located in

23 states and **3** countries

ALUMNI CONNECTION PROGRAMS INCLUDE

Student-Alumni virtual meetups
Student-Alumni mentoring (MentorGrinnell)
Industry-focused Treks
Experts-in-Residence guest visits

CONTACT US |



career.grinnell.edu



grinnell.joinhandshake.com



@grinnell.cls

 **Grinnell College**
Center for Careers, Life,
and Service

For more information, visit
career.grinnell.edu

Center for Careers, Life, and Service

career@grinnell.edu | (641) 269-4940

UPDATED 9-30-25